



energy HT1600

Hot Air Tool

Operating Manual



TECHSPANGROUP

Australia:

Tel. 1-800 148 791

Fax. 1-800 148 799

www.weldy.com.au

New Zealand:

Tel. (09) 827 6567

Fax. (09) 827 6596

www.weldy.co.nz



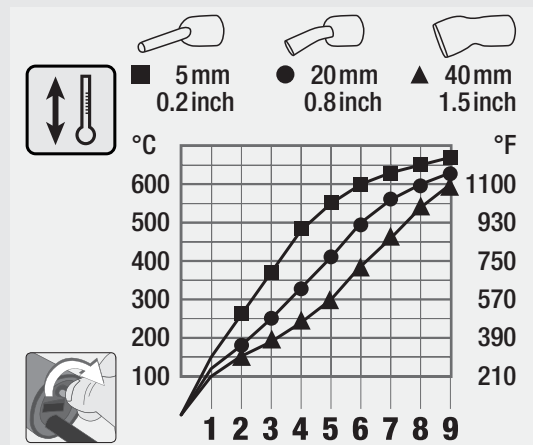
English	Please read operating instructions carefully before use and keep for future reference.
Français	Instructions d'utilisation à lire très attentivement avant mise en marche et à conserver pour dispositions ultérieures.
Español	Por favor, leer detenidamente las instrucciones antes del uso y guardarlas para referencia adicional.
Português	Por favor leia cuidadosamente este manual de instruções antes de utilizar o equipamento e guarde-o para futuras consultas.
Русский	Перед вводом в эксплуатацию внимательно прочтите инструкцию по эксплуатации и сохраните ее для дальнейшего использования.
中文	调试前请仔细阅读操作说明书，然后再进行下一步的操作。

Congratulations on purchasing energy HT1600!




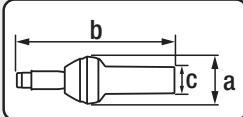



You have chosen a top-class hot air tool made of high-quality components. Every energy HT1600 undergoes strict quality checks before leaving the factory.

Applications

This hot air tool is suitable for welding and shrinking of thermoplastics as well as for heating and drying.

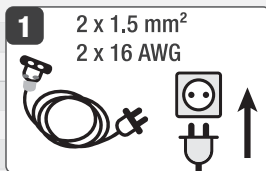


Technical Data / Caractéristiques techniques / Datos técnicos / Dados técnicos Технические данные / 技术数据

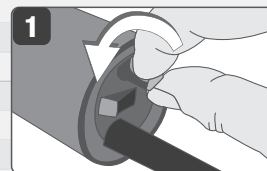
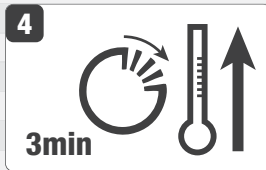
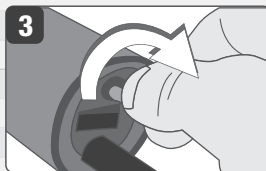
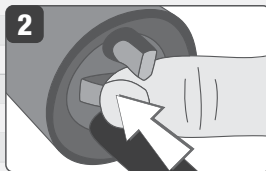
	V~	230	120
	W	1600	1600
	Hz	50 / 60	50 / 60
	g lbs	990 2.18	
	°C	40 – 700	
	°F	104 – 1290	
	a = ø mm / inch	101 / 4.0	
	b = mm / inch	346 / 13.6	
	c = ø mm / inch	59 / 2.3	
	l / min (20°C) cfm (68°F)	max. 240 max. 8.48	
	dB (A)	67	
			

Technical data and specifications are subject to change without prior notice.

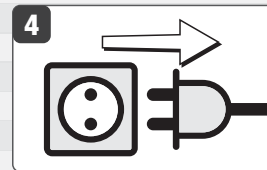
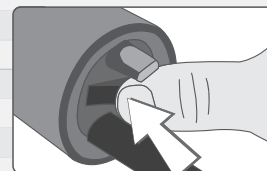
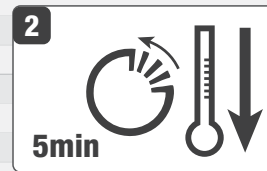
English
Français
Español
Português
Русский
中文



Start-up
Mise en service
Puesta en marcha
Colocação em funcionamento
Ввод в эксплуатацию
投入运行



Switching Off
Désactiver
Desconexión
Desligar
Выключение
具有冷却功能的关断





Repairs should only be carried out by Weldy partners. Restricted to use with original Weldy accessories and spare parts.

Les réparations doivent être effectuées uniquement par des partenaires de Weldy. Utiliser uniquement avec les accessoires d'origine et pièces de rechange Weldy. Las reparaciones solo deben llevarlas a cabo los socios de Weldy. Utilice solo accesorios y repuestos originales de Weldy.

As reparações somente devem ser efetuadas por parceiros Weldy. Utilização restrita com acessórios e peças de substituição Weldy originais.

Ремонт должен выполняться исключительно партнерами Weldy. Использовать исключительно с оригинальными комплектующими и запасными частями Weldy.

修理工作只能由 Weldy 的合作伙伴进行。仅限于使用 Weldy 的原厂附件及配件。

Cleaning air filter

Nettoyer le filtre à air

Limpiar filtro de aire

Limpar filtro de ar

Чистка воздушного фильтра

清洁空气过滤器

Changing heating element

Remplacement de l'élément chauffant

Cambio del elemento calentador

Substituição do elemento de aquecimento

Замена нагревательного элемента

加热元件更换

English

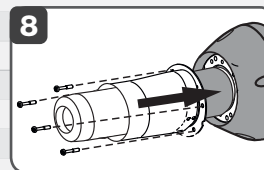
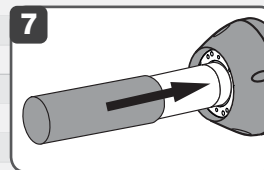
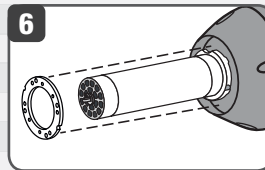
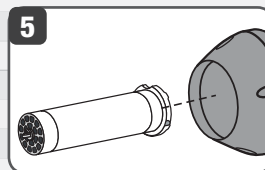
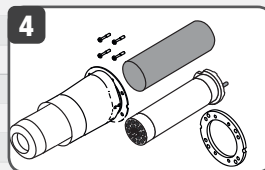
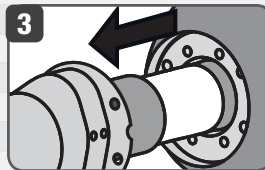
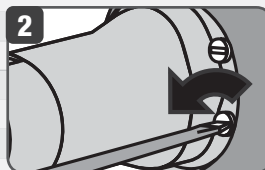
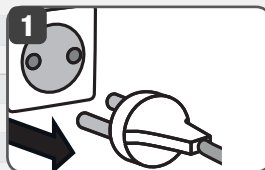
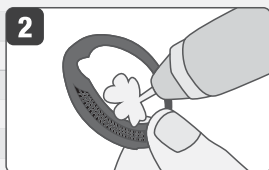
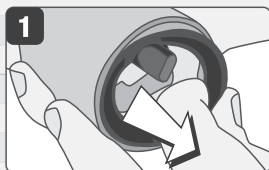
Français

Español

Português

Русский

中文



Warning



DANGER! Danger when opening up the tool, as live components and connections are exposed. Therefore, before opening it, unplug the tool to ensure disconnection from the mains. Before putting into operation, check power supply cord and connector as well as extension cable for electrical and mechanical damage.



Incorrect use of the Hot Air Tool (eg. overheating of the material) can present a **fire and explosion hazard**, especially near combustible materials and explosive gases.



Do not touch the heating element housing and air nozzle when they are hot as they can cause **burns**. Let the tool cool down. Do not point the hot air flow in the direction of people or animals.



WARNING: Danger of intoxication! When working plastics, varnish or similar materials, gases develop that can be aggressive or toxic. Avoid breathing in vapours, even when they appear to be harmless. Always provide for good ventilation of the work area or wear a respirator.

Caution



The voltage rating stated on the tool must correspond to the mains voltage.



For personal protection on building sites we strongly recommend the tool be connected to a RCCB (Residual Current Circuit Breaker).



The tool must be operated under supervision. Heat can ignite flammable materials which are not in view. The machine may only be used by qualified specialists or under their supervision. Children are not authorized to use this machine.



Protect tool from damp and wet.



Repairs should only be carried out by Weldy partners. Restricted to use with original Weldy accessories and spare parts.

Warranty

- For this tool, the guarantee or warranty rights granted by the relevant distributor/seller shall apply. In case of guarantee or warranty claims any manufacturing or workmanship defects will either be repaired or replaced by the distributor at its discretion. Warranty or guarantee rights have to be verified by an invoice or a delivery document. Heating elements shall be excluded from warranty or guarantee.
- Additional guarantee or warranty claims shall be excluded, subject to mandatory provisions of law.
- Warranty or guarantee shall not apply to defects caused by normal wear and tear, overload or improper handling.
- Warranty or guarantee claims will be rejected for tools that have been altered or changed by the purchaser.

Disposal



Power tools, accessories and packaging should be sorted for environmental-friendly recycling. Only for EC countries: Do not dispose of power tools into household waste! According to the European Directive 2002/96/EC on waste electrical and electronic equipment and its incorporation into national law, power tools that are no longer suitable for use must be separately collected and sent for recovery in an environmental-friendly manner.

English

Français

Español

Português

Русский

中文

Important safety instructions

This appliance has a polarized plug (one blade is wider than the other). To reduce the risk of electric shock, this plug is intended to fit in a polarized outlet only one way. If the plug does not fit fully in the outlet, reverse the plug. If it still does not fit, contact a qualified electrician. Do not modify the plug in any way.

Read these instructions

Warning: Extreme care should be taken when stripping paint. The peelings, residue and vapors of paint may contain lead, which is poisonous. Any pre-1977 paint may contain lead and paint applied to homes prior to 1950 is likely to contain lead. Once deposited on surfaces, hand to mouth contact can result in the ingestion of lead. Exposure to even low levels of lead can cause irreversible brain and nervous system damage; young and unborn children are particularly vulnerable.

Before beginning any paint removal process you should determine whether the paint you are removing contains lead. This can be done by your local health department or by a professional who uses a paint analyzer to check the lead content of the paint to be removed. **LEAD-BASED PAINT SHOULD ONLY BE REMOVED BY A PROFESSIONAL AND SHOULD NOT BE REMOVED USING A HEAT GUN.**

Persons removing paint should follow these guidelines:

1. Move the work piece outdoors. If this is not possible, keep the work area well ventilated. Open the windows and put an exhaust fan in one of them. Be sure the fan is moving the air from inside to outside.
2. Remove or cover any carpets, rugs, furniture, clothing, cooking utensils and air ducts.
3. Place drop cloths in the work area to catch any paint chips or peelings. Wear protective clothing such as extra work shirts, overalls and hats.
4. Work in one room at a time. Furnishings should be removed or placed in the

center of the room and covered. Work areas should be sealed off from the rest of the dwelling by sealing doorways with drop cloths.

5. Children, pregnant or potentially pregnant women and nursing mothers should not be present in the work area until the work is done and all clean up is complete.
6. Wear dust respirator mask or a dual filter (dust and fume) respirator mask which has been approved by the Occupational Safety and Health Administration (OSHA), the National Institute of Safety and Health (NIOSH), or the United States Bureau of Mines. These masks and replaceable filters are readily available at major hardware stores. Be sure the mask fits. Beards and facial hair may keep masks from sealing properly. Change filters often. **DISPOSABLE PAPER MASKS ARE NOT ADEQUATE.**
7. Use caution when operating the hot air tool. Keep the heat gun moving as excessive heat will generate fumes which can be inhaled by the operator.
8. Keep food and drink out of the work area. Wash hands, arms and face and rinse mouth before eating or drinking. Do not smoke or chew gum or tobacco in the work area.
9. Clean up all removed paint and dust by wet mopping the floors. Use a wet cloth to clean all walls, sills and any other surface where paint or dust is clinging. **DO NOT SWEEP, DRY DUST OR VACUUM.** Use a high phosphate detergent or trisodium phosphate (TSP) to wash and mop areas.
10. At the end of each work session put the paint chips and debris in a double plastic bag, close it with tape or twist ties and dispose of properly.
11. Remove protective clothing and work shoes in the work area to avoid carrying dust into the rest of the dwelling. Wash work clothes separately. Wipe shoes off with a wet rag that is then washed with the work clothes. Wash hair and body thoroughly with soap and water.

SAVE THESE INSTRUCTIONS

English

Français

Español

Português

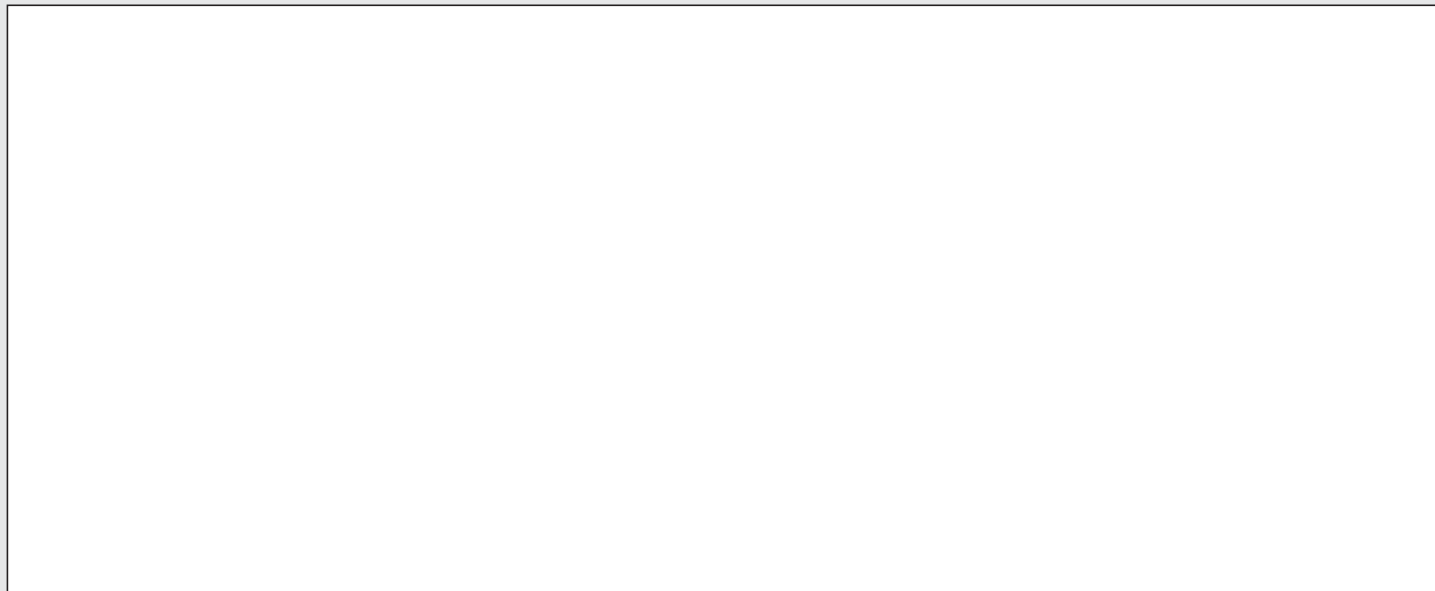
Русский

中文



Australia: www.weldy.com.au
New Zealand: www.weldy.co.nz

Your partner:



TECHSPANGROUP

© Copyright by Weldy

Weldy AG
Galileo-Strasse 10
CH-6056 Kaegiswil
Switzerland

Australia:
Tel. 1-800 148 791
Fax. 1-800 148 799
www.weldy.com.au

New Zealand:
Tel. (09) 827 6567
Fax. (09) 827 6596
www.weldy.co.nz